



FACULTY-LED
STUDY ABROAD

KIIS Spain II, Summer 2021

SPAN 455: SPAN 455 Topics-Hispanic Studies: Spanish Female Detectives in Literature and Visual Media (3 credits)

Professor: Inma Pertusa

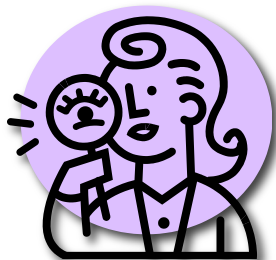
Email: <inma.pertusa@wku.edu>

Office hours: By Appointment

Syllabus subject to change

Course Objectives and Specific Learning Outcomes:

En este curso propone un acercamiento al estudio del género criminal en la literatura española concentrándonos en la representación de la mujer investigadora en una selección de obras de escritoras españolas. A través de la lectura de varios textos literarios y teóricos y el análisis de producciones cinematográficas que se inspiraron en algunas de las obras leídas, así como series de TV originales, podremos establecer las características del género y los enlaces que existen entre cine, TV y literatura.



Además de presentar tanto las bases narrativas del género criminal como los principios de la teoría feminista al respecto, se efectuarán análisis de las obras y las películas y series según el contexto histórico, político y social, así como la influencia de un área en la otra.

Durante el curso, el estudiante tendrá la oportunidad de ejercitar sus habilidades comunicativas y analíticas, tanto escritas como orales, por medio de la elaboración de ensayos críticos y por la participación en discusiones en grupos, presentaciones orales y debates temáticos, así como la creación colaborativa de un cuento criminal original.

Required Readings and Materials:

- *Fundido en negro: Antología con una selección de cuentos de las escritoras Rosa Ribas, Isabel Franc, Carolina Soler, Berna González Harbou, Alicia Giménez Bartlett, María Antonia Oliver, Susana Hernández, Clara Asunción García, Cristina Fallarás, y Carolina Solé (Se comprará en Segovia por unos 20-25 euros).*
- *Operación mantra, de Susana Martín Gijón. Para comprar en Amazon edición Kindle.*
- Paquete con una selección de artículos críticos y otros textos literarios (disponible en pdf en junio).

KIIS Study Abroad Mission Statement:

KIIS provides high-quality education abroad programs for students from all diverse backgrounds that promote deep international learning, are integrated into the curriculum, and encourage critical and creative thinking. Our goal is to help students understand the wider world and develop personal and professional skills for lifelong enrichment. We strive to go beyond generalizations and cultural stereotypes to help foster a nuanced appreciation of the world in which we live.

Students participating on KIIS study abroad programs aim to:

- 1) Understand contemporary issues of their host country/countries (KIIS Spain).
- 2) Develop skills to interact comfortably in a global setting.
- 3) Understand other cultures.

Prior to your KIIS study abroad program, and again at the conclusion of your program, KIIS will ask each student to a) answer a few multiple-choice questions, and b) write a short reflective essay (two paragraphs in length) related to the elements detailed above. There is no right or wrong answer, and your responses will not affect your grade in any way. The purpose of the exercise is to help KIIS measure the effectiveness of its study abroad programs.

Course Components and Requirements:

Preparación del curso: Los estudiantes tienen la responsabilidad y el deber de leer y preparar las lecturas correspondientes antes de cada clase. La mera lectura de un texto no supone en ninguna forma "haber preparado" dicho texto para discutirlo en clase. Es imprescindible que las selecciones sean leídas con atención, marcando las partes importantes, anotando ideas relacionadas con el objetivo de clarificar no sólo el argumento general, sino también interpretar la estructura del mismo, las características de cada parte, las intenciones latentes del escritor y el efecto que produce en el lector.

Se espera la participación constante y activa de cada estudiante. Se asignará una nota de participación regularmente. Se usará exclusivamente español en clase.

Asistencia: La asistencia a clase es obligatoria. No se permitirán ausencias a clase sin penalización. Por cada ausencia no justificada o no válida se deducirá 10% de la nota final. Cada dos veces que se llegue tarde a clase o se salga antes de tiempo, se contará como una ausencia. En cualquier caso, el alumno que falte a clase tendrá que hablar con la directora del programa y con la profesora.

KIIS program participants are expected to be punctual to and in attendance at all classes, presentations, meetings and required excursions, and to remain with the program for the full academic period. Unexcused absences from classes and/or mandatory meetings will result in a lowering of the student's final grade, as will excessive tardiness. Multiple unexcused absences could result in expulsion from the program. Any absence from an academic class session must be excused for medical reasons.

Reseñas: Durante el curso se designarán 2 reseña críticas (800-1200 palabras) en las que se analizará un aspecto determinado de un texto leído en clase. No se aceptarán reseñas después de la fecha límite de entrega.

Informes orales: Cada estudiante tendrá que preparar una presentación analítica sobre un cuento o un ensayo crítico leído en clase. Las presentaciones no durarán más de 15 minutos y darán la oportunidad para una discusión más extensa entre todos los miembros del curso.

Un cuento original: Durante el curso todos los estudiantes colaborarán para escribir un cuento original con una detective o investigadora que se enfrenta a un caso particular. En clase se darán más datos sobre esta tarea.

Ensayos de reacción/pruebas de lectura: Regularmente los estudiantes desarrollarán en clase un ensayo de reacción a un pasaje de una lectura (novelas, cuentos, ensayos teóricos) seleccionado por la profesora. Estos ensayos de reacción, como las pruebas de lectura, no se pueden recuperar.

Películas y series de TV: Durante el curso tendremos la oportunidad de ver y analizar (en clase) una selección de películas y series de TV en español y en inglés.

Academic Integrity and Plagiarism:

Students are expected to abide by the university's guidelines regarding academic integrity. As indicated in the undergraduate catalogue, "Students who commit any act of academic dishonesty may receive from the instructor a failing grade in that portion of the coursework in which the act is detected or a failing grade in the course without possibility of withdrawal" (27).

All academic work, written or otherwise, submitted by students to their instructors or other academic supervisors, is expected to be the result of their own thought, research or self-expression. When students submit work purporting to be their own, but which in any way borrows ideas, organization, wording or anything else from another source without appropriate acknowledgment of the fact, the students are guilty of plagiarism. Using essays or other materials done for another class also constitute plagiarism. The minimum penalty for plagiarism at any level will be a grade of 0 in the assignment. All cases of plagiarism will be reported to the Dean of Students.

Course Assessment:

La nota final de este curso se calculará según las siguientes categorías y porcentajes:

Cuento cooperativo 20%	Pruebas de lectura y ensayos de reacción 15%
Informes orales individuales 10%	Reseñas (2) 30%
Participación 25%	

A=90-100 B=80-89 C=70-79 D=60-69 E=0-59

Note KIIS/WKU does not award +/- grades, only full letter grades.

Disability Accommodation:

KIIS will make every reasonable effort to provide accommodations for program participants with special needs or disabilities, but we cannot guarantee that we will be able to do so. Be aware that many foreign countries do not have comprehensive legislation comparable to the Americans with Disabilities Act (ADA). As a result, businesses and other establishments operating in foreign countries may not be able to provide accommodations.

If you have a disability accommodation need, we recommend you contact your KIIS Campus Representative, <https://www.kiis.org/about-kiis/contact-us/campus-representatives/> early in your program selection process so that s/he has time to discuss any specific needs, including which KIIS programs may be best suited. You also are welcome to contact KIIS Assistant Director, Maria Canning, maria.canning@wku.edu, to discuss your disability accommodation needs (e.g. housing, transportation, excursions, class schedule, etc.).

Immediately after acceptance, notify KIIS Assistant Director, Maria Canning, or KIIS Admissions and Enrollment Specialist, Haley McTaggart, haley.mctaggart@wku.edu, if you have a special need or disability that might require any form of accommodation abroad. Failure to notify KIIS may prevent you from participating on your KIIS program.

If you require any accommodations abroad, you must provide KIIS Assistant Director, Maria Canning, or KIIS Admissions and Enrollment Specialist, Haley McTaggart, an accommodation letter from your home campus' disability accommodation office that lists the accommodations you are eligible to receive. Please do not request accommodations directly from your KIIS Program Director or other KIIS Faculty; the KIIS Office will notify your KIIS Program Director and/or Faculty after we have received your above accommodation letter.

In some cases, you may need to make arrangements for a caregiver to join you on your KIIS program, should your physician, campus disability accommodation office, or KIIS make such a recommendation or require it.

Title IX / Discrimination & Harassment:

Recent attention to gender discrimination and sexual harassment at colleges and universities reminds us of the importance of adhering to standards of ethical and professional behavior. KIIS Study Abroad is committed to supporting and encouraging safe and equitable educational environments for our students, faculty, and program directors. Students, faculty, and program directors are required to be civil and treat each other with dignity and respect. As such, harassment and/or discrimination of any kind will not be permitted or tolerated.

Sexual misconduct (sexual harassment, sexual assault, and sexual/dating/domestic violence) and sex discrimination are violations of KIIS policies. If you experience an incident of sex/gender-based discrimination, harassment and/or sexual misconduct, you are encouraged to report it to a) KIIS Assistant Director Maria Canning (+1-859-200-1000) or KIIS Executive Director, John Dizgun (+1-270-227-2288), b) WKU's Title IX Coordinator, Andrea Anderson (270-745-5398 / andrea.anderson@wku.edu) or WKU's Title IX Investigators, Michael Crowe (270-745-5429 / michael.crowe@wku.edu) or Joshua Hayes (270-745-5121 / joshua.hayes@wku.edu). Please note that while you may report an incident of sex/gender based discrimination, harassment and/or sexual misconduct to a KIIS program director and/or faculty member, KIIS program directors and faculty are considered "Responsible Employees" of Western Kentucky University and MUST report what you share to WKU's Title IX Coordinator or Title IX Investigator.

If you would like to speak with someone who may be able to afford you confidentiality, you may contact WKU's Counseling and Testing Center, <https://www.wku.edu/heretohelp/> at 270-745-3159.

For more information on KIIS Title IX, see <https://www.kiis.org/students/health-safety/title-ix-clery/>; additional Title IX resources can be found here <https://www.wku.edu/eoo/brochure2019update.pdf>.

Everyone should be able to participate on a KIIS program, attend a KIIS event, or work in a KIIS environment (e.g. KIIS office) without fear of sexual harassment or discrimination of any kind. Be respectful of each other.

Participation Rubric (10 points for each un/excused absence during this period will be deducted from the participation score)

- **Class Preparation:** Arrived for class **on time with homework already completed** and ready to discuss with others.
- **Use of Spanish:** Spoke exclusively **in Spanish** during whole class and group discussions, even after finishing an activity with his/her partner, and did so at an appropriate level of proficiency.
- **Active Learner:** **Initiated** oral interaction by responding to classmate's comments in addition to responding to instructor's questions **without being called on**.
- **Frequency of Participation:** **Participated as frequently** as possible in whole group and pair discussions of readings and/or cultural topics by presenting his/her ideas or opinions **without being called on**.
- **Attention, Focus, and Respect:** Demonstrated an **attentive, alert, and engaged attitude** during class as well as respect for others by contributing to a classroom atmosphere conducive to learning.

Rúbrica de reseñas

Possible points	Exemplary Work 20 19.5 19 18.5 18	Standard Met 17 16.5 16 15.5 15	Standard Partially Met 14 13.5 13 12.5 12 11	Standard Not Met 10 9 8 7 6 4 0
Thesis and Content	Presents a clear and delimited purpose thesis statement. Addresses all aspects of thesis. Ideas thoroughly developed with good range of detail.	Presents a clear and partially delimited purpose statement. Adequately addresses thesis. Ideas mostly developed with moderate range of detail.	Presents a general thesis, without delimited purpose statement. Addresses some aspects of the thesis. Ideas partially supported. Lack of detailed development of ideas.	No clear thesis. Does not adequately address thesis. Almost no development of ideas
Analysis	Analysis is logical. Ideas are well supported with appropriate citations from the text, and secondary critical sources	Analysis is logical. Most ideas are supported with appropriate citations from the text, and secondary critical sources.	Gaps in logic of argument. Some ideas are supported with appropriate citations from the text, and secondary critical sources.	Argument is difficult to follow. Few or no ideas are supported with appropriate citations from the text, and secondary critical sources
Organization	Well organized with clear introduction, development and conclusion. Coherent and cohesive. Excellent use of connecting words.	Mostly organized and exhibiting coherence among the parts. Adequate use of connecting words.	Somewhat organized and somewhat coherent but with disconnected and/or repetitive ideas. Appropriate use of basic connecting words.	Confusing and disconnected organization. Lacks introduction and conclusion. Little or no appropriate use of connecting words.
Language Use, Grammar	Excellent variety of grammatical forms, use of complex sentences, mastery of basic grammar aspects with very few errors. No errors that interfere with meaning. Sophisticated range and extensive variety of words. Appropriate use of idiomatic expressions and register.	Good variety of grammatical forms. Attempts complex sentences that may not always be accurate. Occasional errors in basic grammar aspects, but these seldom obscure meaning. Good but not extensive variety. Occasional errors of word choice such as false cognates, invented words, but they seldom obscure meaning. Register mostly appropriate	Some variety of grammatical forms but with inaccuracies. Simplistic sentence structure. Frequent errors with basic grammar aspects that may at times obscure meaning. Limited range and variety of words. Frequent errors of word choice or usage. Some obscure meaning. Some evidence of translation from the native language.	Almost no variety in grammatical forms. Numerous errors in simplistic sentence structures. Errors obscure meaning. Very limited range and variety of words. Consistent and frequent errors with word choice. Frequent evidence of translation from the native language.
Citation and bibliography	Follows MLA format. Includes and uses academic secondary sources in the bibliography.	Follows MLA format with some errors. Includes and uses academic secondary sources. Incomplete bibliography	Many errors in the MLA format. Non-academic secondary sources. Does not use sources in the essay. Incomplete /missing bibliography.	No MLA style used. Inappropriate/Missing bibliography. Missing citations in the essay.